

Govt. Licence. No.: 938/067/068

Mass Human Resource Pvt. Ltd.

ISO Certified Ethical Recruitment Company



We Make

RECRUITMENT EASIER



About Us

MASS HUMAN RESOURCE (MHR) as a premier ethical recruitment agency, proudly certified under ISO 9001:2015 and registered with the RBA. Since our establishment in 2010, MHR has been operating with a dedicated team of 25 energetic and hardworking professionals. We specialize in comprehensive manpower outsourcing services, catering to diverse industries and professionals from Nepal to the Middle East.

MHR upholds a strict non-discrimination policy, ensuring equal employment opportunities for all, regardless of race, color, religion, gender, nationality, age, marital status, veteran status, or any other legally protected status. We provide a broad spectrum of job placements across various industries, including Oil and Gas, Facilities Management, Hospitality, Administration, Supermarkets, Security, Manufacturing, and Healthcare. Our services extend from Nepal to numerous countries across Asia, the Middle East, Southeast Asia, and Europe. Committed to excellence, MHR prioritizes client satisfaction by actively listening to their needs and maintaining accessibility at all times. This dedication has helped us build long-term partnerships, leading to a network of over **250 satisfied clients** worldwide.

At MHR, we emphasize delivering exceptional value and service. Our primary goal is to ensure quality assurance, fulfill commitments, and address client requirements with the utmost professionalism. We strive to foster enduring relationships with our existing partners while expanding our global reach.

Driven by inspiration and an unwavering commitment to go the extra mile, MHR aims to leave a lasting impact in the recruitment industry through excellence and dedication.



Chairman Profile



Mr. Ekendra Bahadur Kunwar
Chairman

Mr. Ekendra Bahadur Kunwar, the Chairman of Mass Human Resource (P.), Ltd., has pursued Masters Degree in various Courses i.e. Sociology, Political Science and Geography at Puna University, Maharastra, India and Tribhuvan University, Nepal. He has nearly two decades of experience in the recruiting sector. Mr. Kunwar directs the operations of the Company and has played a central part in the advancement of the organization. He is conscientious, well-informed, and focused in his approach. Mr. Kunwar has handled jobs of a wide variety from a range of Middle-east, Europe and South East Asian countries. Besides this, Mr. Kunwar is a distinguished individual and is part of various National and International Boards and Bodies. He has successfully completed his tenure as Member Secretary of Nepal Sports Council (NSC) . His most prominent resources are his open connection aptitudes that he has ached through wide both inbound & outbound traveling.

His Roles in other sectors:

- ▶▶ Committee Executive of Nepal Sports Council
- ▶▶ President of Nepal Adventure Running Federation
- ▶▶ Advisor of Non-Resident Nepali Association
- ▶▶ Advisor of Nepal Confederation of Sports, Nepal
- ▶▶ President of KIF Kurodaiya Martial Arts Association



Corporate Commitment

Greetings from MASS HUMAN RESOURCE NEPAL,

In today's competitive Contemporary Industrial Arena, Human Resources are the most valuable assets that the world needed desperately. So in the midst of this, we, MASS HUMAN RESOURCE PVT LTD a leading manpower company in Nepal, is dedicated to provide quality and skilled workers on the respective fields, fully supporting the vision on social compliance practice of Ethical recruitment .

We MASS HUMAN RESOURCE are fully committed to adhere to all Ethical recruitment and Zero Recruitment Fees Policy during the recruitment process and provide equal opportunities to all the workers without any bias. We are aligning our business and operations to promote the elements emphasize on social compliance such as SMETA, RBA and etc. this includes workers and our staff's rights and responsibilities, business ethics and implementing management system. We invest our consistent efforts to meet the expectations of our valued business associates and manpower. MHR practices non-discrimination and fair treatment for our staffs and workers. We will minimize our drawback with the constant and rational focus on positive changes.

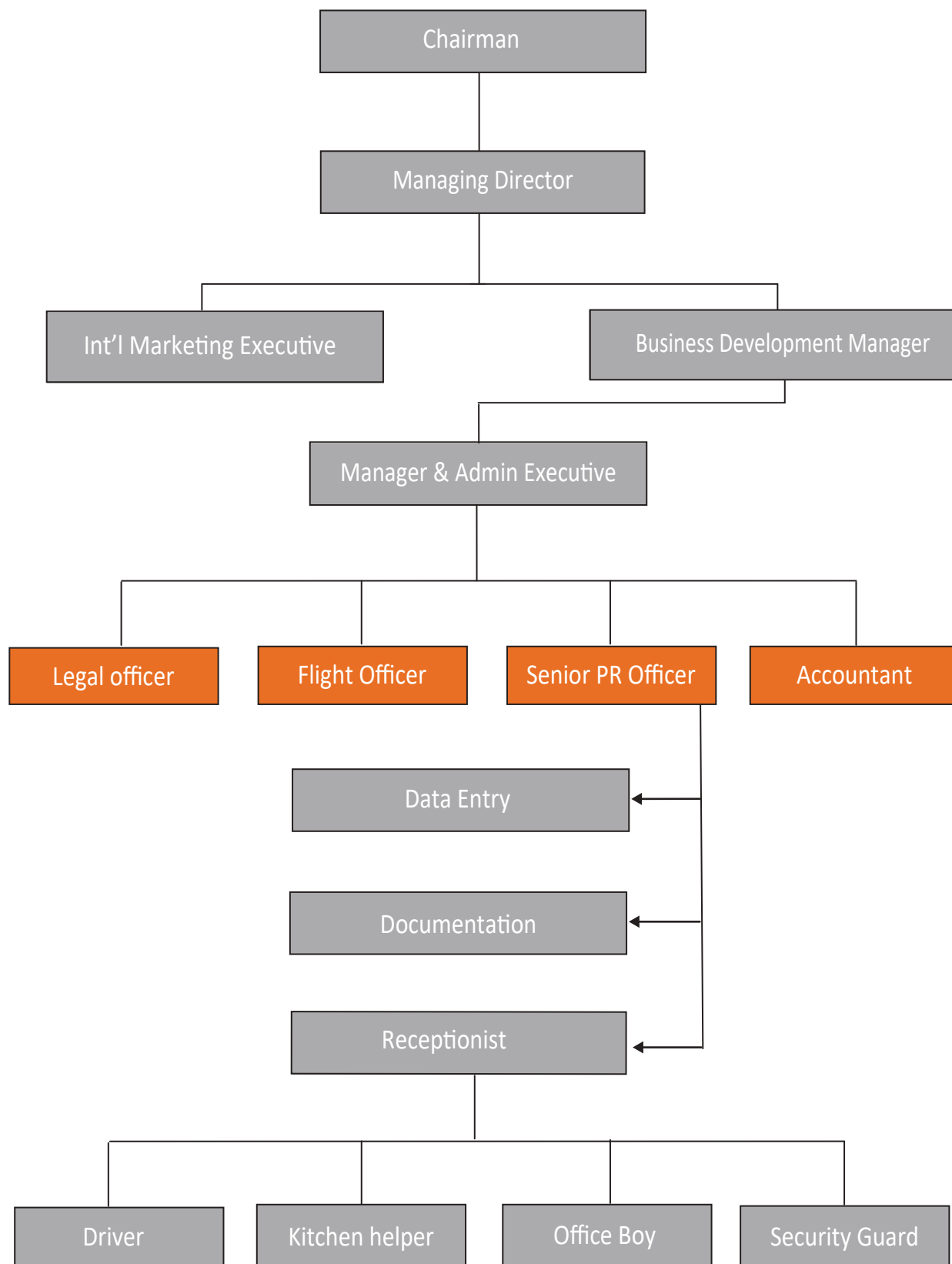
We, Mass Human Resource will maintain our commitment to regulatory and legal compliance, following Nepal Labor Law and Foreign Employment Act. We, MHR team will make our services better and smooth according to feedback of Clients and Workers. In coming days, we will make our recruitment policy more transparent and easier.

Thank you,

Dipendra Bahadur Oli
Managing Director
Ph No: +977 9851127922



Organization Chart





Legal Documents





Our Major Clients

United Arab Emirates (UAE)

- » CAPITAL CATERING SERVICES (ADNEC)
- » APEX ALWATANIAH CATERING COMPANY
- » NATIONAL CATERING COMPANY (NCC)
- » ARMED FORCES OFFICER CLUB AND HOTEL
- » AL BARAKAH HOLDING
- » SOBHA CONSTRUCTION LLC
- » LARSEN & TOUBRO LIMITED
- » SILVER COAST CONSTRUCTION & BORING LLC
- » AL GEEMI CONTRACTING COMPANY
- » AGILITY ENGINEERING AND CONTRACTING
- » INNOVO BUILD
- » LAMPRELL ENERGY LTD
- » FIBREX CONSTRUCTION GROUP
- » DAEAH ENGINEERING CONSTRUCTION P. LTD
- » ARABIAN CONSTRUCTION COMPANY
- » ECOART DECOR
- » REACH GROUP
- » PARKONIC PARKING SYSTEMS AND MANAGEMENT



Kingdom of Saudi Arabia (KSA)

- » LARSEN & TURBO LIMITED
- » KALPATARU PROJECTS INTERNATIONAL LIMITED
- » DAEAH SAUDI ARABIA
- » MAPA GROUP
- » DKN LIMITED COMPANY
- » AL AMARA INTERNATIONAL
- » TOWER PLANNING TRADING & CONTRACTING CO. LTD
- » SAUDI DELTA COMPANY
- » SUNGCHANG & ABDULLAH CONTRACTING CO.LTD
- » RAWABI HOLDING
- » CATERING CARE COMPANY
- » GULF MAHMAL SUPPORT SERVICES CO. LTD
- » PICK AND PICK RIYADH





Our Major Clients

Malaysia

- » ENCOMPASS INDUSTRIES SDN. BHD.
- » BRIGHTWAY HOLDINGS SDN. BHD.
- » BON FOOD INDUSTRIES SDN. BHD.
- » TOP FRUITS SDN. BHD.
- » K.N.LEE KNITTING INDUSTRIES SDN. BHD.
- » SONFUAT PRECISION INDUSTRIES SDN. BHD.
- » GLOBALCAST SDN. BHD.
- » DELLOYD INDUSTRIES (M) SDN. BHD.
- » ARMSTRONG ELECTRONICS SDN. BHD.
- » FUJITSU COMPONENT SDN. BHD.
- » ELNA-SONIC SDN. BHD.
- » BIZLINK TECHNOLOGY (S.E.A) SDN. BHD.
- » EVYAP SABUN MALAYSIA SDN. BHD.
- » YTL HOTELS
- » K K SUPERMARKET
- » MYNEWS .COM SDN. BHD.
- » SECURIGHT SDN. BHD.
- » KSD GLOBAL SECURE GUARDS (M) SDN.BHD.
- » MALIK STREAMS SECURITY SDN. BHD.
- » MUTIYARA KAWALAN SDN. BHD.
- » YTC GROUP OF COMPANIES



Qatar

- » A TO Z SERVICES
- » BETON W.L.L
- » CONSTRUCTION AND RECONSTRUCTION ENGINEERING CO.(CRC)
- » GHANTOOT CONSTRUCTION AND TRANSPORTATION DEVELOPMENT CO.
- » TADMUR HOLDING W.L.L
- » DOHA ENTERPRISES GROUP (A&J)
- » GULF FACILITIES MANAGEMENT (GFM)
- » THE GATE MALL
- » THE WINGS FRESH FOOD W.L.L
- » AL HAYA WASTE TREATMENT FACTORY



Oman

- » LAMSAST ALHOOR TRADING
- » ESKAN MAJAN TRADING
- » MIRANI PROJECT AND SERVICES (OMAN)
- » AL THABAT HOLDING LLC
- » PROTON INTERNATIONAL
- » OMAN REFRESHMENT COMPANY
- » MUSCAT ADVANCED PROJECTS





Activities



Front Desk



Admin Team



HR Team



Documentation Team



Client visit at MHR



Client visit at MHR



Activities



Health & Safety Training



Health & Safety Training



During The Interview



During The Interview



During The Interview



During The Departure



About Nepal

Nepal is a mountainous and a land locked country situated between two giant neighbours, China to the North and India to the South, East and West. Nepal boasts of having the highest peak of the world, Mount Everest and visitors from all over the world visit the country to climb the Mount Everest and to see the beautiful panorama, snow-capped mountains and gorgeous historic monuments.

Moreover, it should also be noted that Nepal is the 2nd richest country in the world in water resources with a substantial number of rivers & streams flowing towards the South from the high himalayas. And the Tilicho Lake situated at the highest land of the world is also in Nepal. So the people who visits Nepal, definitely gets optimal gratification from it's natural gorgeous scenery. It has highly diverse and rich geography, culture and religions.

Other Information

Time : +5.45 with GMT

Seasons

Spring : March - May

Summer : June - August

Autumn : September - November

Winter : December - February



Visa

Available at Nepal embassy and Consulates abroad or on arrival at Tribhuvan International Airport in Nepal.

Visa Fee

US \$30 for single entry valid for 60 days US \$80 for multiple entry.

Area

1,47,181 Sq. Km.

Latitude

26° 21' - 30° 26' N

Political System

Federal Democratic Republic System

Capital

Kathmandu

Longitude

80° 3' - 88° 12'

National Language

Nepali

Location

Between China & India

Population

30 Million (Approx)

Mass Human Resource Pvt. Ltd.



Mass Human Resource Pvt. Ltd.

Address : Tokha Road, Samakhushi, Kathmandu, Nepal

Tel : +977 1 4983080, 4983088

Email : info@mhrnepal.com
mass@mhrnepal.com
mys@mhrnepal.com

Website : www.mhrnepal.com